



# MAGNUM

Illumination for Industry, Logistics & Sport

# Light

\_builds tomorrow

## Contents

<b>About the company</b>	<b>3</b>	<b>MAGNUM's Safety Grille</b>	<b>12</b>	Application benefits	21
<b>Company policy</b>	<b>4</b>	Project description	14	Recommended Applications	22
<b>MAGNUM - introduction</b>	<b>5</b>	Lighting in action	15	<b>Contact details</b>	<b>23</b>
Certified product	7	Industrial applications	16		
Product's description	8	Pools & sport halls applications	18		
Catalogue card	10	<b>Elliptical light</b>	<b>19</b>		

SINCE THE YEAR 2000,  
WE HAVE POSITIONED  
OURSELVES AS A  
FRONTRUNNER IN CREATING  
INNOVATIVE LIGHTING  
SOLUTIONS, INSPIRED BY  
DESIGNERS FROM AROUND  
THE WORLD.

Our vision transcends the mere illumination of spaces; we endeavor to craft experiences that enhance quality of life while safeguarding our planet for future generations.

Our solutions are straightforward yet promote ecological sustainability and energy efficiency. Each project represents a progressive step toward development.



#### CONTACT

+48 22 567 01 00  
info@spectra-lighting.pl



#### *We engage in collaboration with companies from:*

- |                          |               |                   |                        |
|--------------------------|---------------|-------------------|------------------------|
| - Saudi Arabia           | - Greece      | - Lebanon         | - Switzerland          |
| - Armenia                | - Georgia     | - Lithuania       | - Sweden               |
| - Australia              | - Spain       | - Luxembourg      | - Turkey               |
| - Austria                | - Netherlands | - Latvia          | - Taiwan               |
| - Belgium                | - India       | - North Macedonia | - Ukraine              |
| - Bosnia and Herzegovina | - Ireland     | - Moldova         | - USA                  |
| - Bulgaria               | - Israel      | - Norway          | - Hungary              |
| - Croatia                | - Japan       | - Poland          | - United Kingdom       |
| - Czech Republic         | - Jordan      | - Portugal        | - Italy                |
| - Denmark                | - Kazakhstan  | - Romania         | - United Arab Emirates |
| - Estonia                | - Canada      | - Serbia          |                        |
| - Finland                | - Qatar       | - Slovakia        |                        |
| - France                 | - Kuwait      | - Slovenia        |                        |

At Spectra Lighting, we are progressively aligning our operations with sustainable development. Our strategy involves investing in contemporary, eco-friendly technologies and executing pro-ecological initiatives throughout every phase of production.



## ECOLOGICAL INITIATIVES

We have implemented several measures to minimize our carbon footprint and safeguard natural resources:

### SUSTAINABLE ENERGY

Facilities equipped with photovoltaic panels.

### CLOSED HYDROLOGICAL CYCLE

Closed washing cycle in production processes, reducing water usage and contamination.

### MATERIAL RECYCLING

Systematic recovery of materials such as powder coatings, aluminum, and pet plastics.



## INNOVATION AND FUTURITY

We manufacture ecofriendly LED lighting, construct energy-efficient production facilities, and proactively enhance logistics to minimize CO<sub>2</sub> emissions.



## SOCIAL AND PRACTICAL ENGAGEMENT

We offer a secure working environment, equitable pay, and opportunities for ongoing professional development. We support local social initiatives, including sports teams, to promote a healthy lifestyle and foster community integration.



## TRANSPARENCY AND ETHICS

We adhere to international ethical standards as outlined in our Code of Ethics and Code of Conduct. These documents are available at: [www.spectra-lighting.pl](http://www.spectra-lighting.pl)







## **MAGNUM** when precision, durability, and professional-grade lighting performance are non-negotiable

As a trusted manufacturer in the professional lighting industry, we specialize in high-performance LED luminaires designed for architectural, industrial, and sports environments. Our MAGNUM series is engineered for applications that demand precision optics, durable construction, and regulatory compliance.

Fully compliant with key EU directives (EMC, LVD, RoHS, Ecodesign) and harmonized standards (PN-EN, IEC), MAGNUM is backed by complete photometric documentation and lighting simulation support.



# Light that elevates efficiency



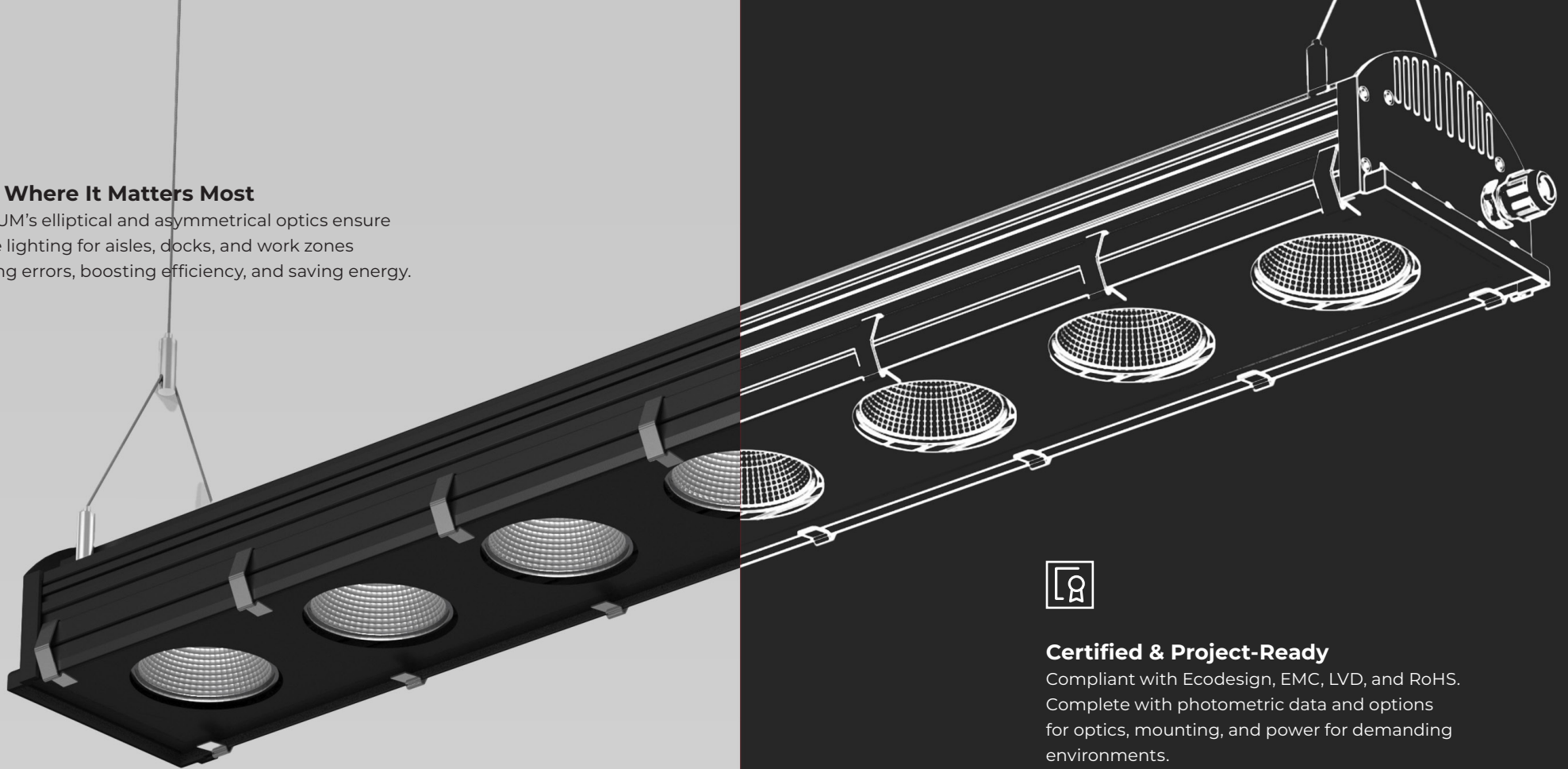
At Spectra Lighting, we understand the pace and precision of modern industry — from production halls and logistics centers to loading bays, swimming pools, sports facilities, and perimeter lighting.

The MAGNUM luminaire delivers controlled, high-efficiency illumination exactly where it's needed. Available with both symmetrical and asymmetrical distributions, it supports tailored lighting designs that meet the specific needs of each site—minimizing glare, spill light, and energy waste.



### Light Where It Matters Most

MAGNUM's elliptical and asymmetrical optics ensure precise lighting for aisles, docks, and work zones reducing errors, boosting efficiency, and saving energy.



### Engineered for Tough Conditions

Rated IP65 and operable from -25°C to +30°C, MAGNUM resists dust, water, and temperature extremes. An optional safety grille adds protection in high-impact areas.



### Certified & Project-Ready

Compliant with Ecodesign, EMC, LVD, and RoHS. Complete with photometric data and options for optics, mounting, and power for demanding environments.



PRODUCT

# MAGNUM

Manufacturer: **Spectra Lighting sp. z o.o.**

DOCUMENTATION

## HAZARDOUS SUBSTANCES

**PN-EN IEC 63000:2019-01** Technical documentation for restricting hazardous substances

LUMINAIRES & ENCLOSURES

## SAFETY

**PN-EN 60529:2003** IP ratings

**PN-EN 60598-1:2015** General requirements & tests

**PN-EN 60598-2-22:2015-01** Emergency lighting requirements

## Why MAGNUM?

**Built for continuous use in logistics, production, and outdoor spaces.**

**Energy-optimized:** integrates with smart controls, presence sensors, and daylight harvesting.

**Fully EU-compliant (CE):** meets EMC, LVD, RoHS, and Ecodesign standards.

ELECTROMAGNETIC COMPATIBILITY

## IMMUNITY

**PN-EN 61547:2009** EMC immunity requirements

**PN-EN 62493:2015-11** Exposure to EM fields

ELECTROMAGNETIC COMPATIBILITY

## EMISSION

**PN-EN 55015:2013** Radio interference

**PN-EN 61000-3-2:2014** Harmonic currents

**PN-EN 61000-3-3:2013** Flicker & voltage variations

SUMMARY

## CE COMPLIANCE

**2014/30/UE** Electromagnetic Compatibility

**2014/35/UE** Low Voltage

**2009/125/WE** Ecodesign

**2011/65/UE** RoHS





# Forward-thinking light for forward- moving industries

As factories, warehouses, and transport centers become more automated and data-driven, lighting must do more than just illuminate. The next generation of lighting like MAGNUM delivers safety, clarity, and performance where it matters most. It's lighting that not only meets standards but sets new ones.



# MAGNUM

## DESCRIPTION

Designed to meet the needs of modern industrial spaces - combining high energy efficiency, compliance with EU Ecodesign standards, and aesthetic functionality.

## APPLICATION

warehouses, production halls, sport halls and pools

## HOUSING

aluminum

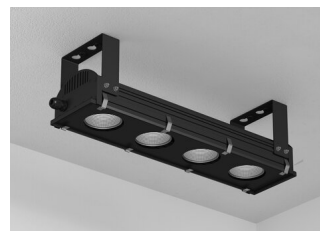
## POWER SUPPLY

electronic, complete with luminaire

## MAGNUM

07.180....

LUMINAIRE POWER [W]	43 - 189
LUMINAIRE LUMINOUS FLUX [lm]	5200 - 24300
DISTRIBUTION ANGLE [°]	asymmetrical/ symmetrical 17, 23, 39, 59
COLOUR TEMPERATURE [K]	3000, 4000
LIFETIME LXX BXX	L90B10@50.000h
LENGTH L [mm]	416, 526, 636, 746, 856
THE RANGE OF PERMISSIBLE AMBIENT TEMPERATURES [°C]	-25 ... +30
THE COLOUR OF THE HOUSING	RAL9005 (black)



**SURFACE-MOUNTED**  
07.180.2XXX.03.XXX

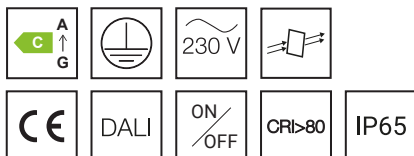


**WALL**  
07.180.2XXX.03.XXX

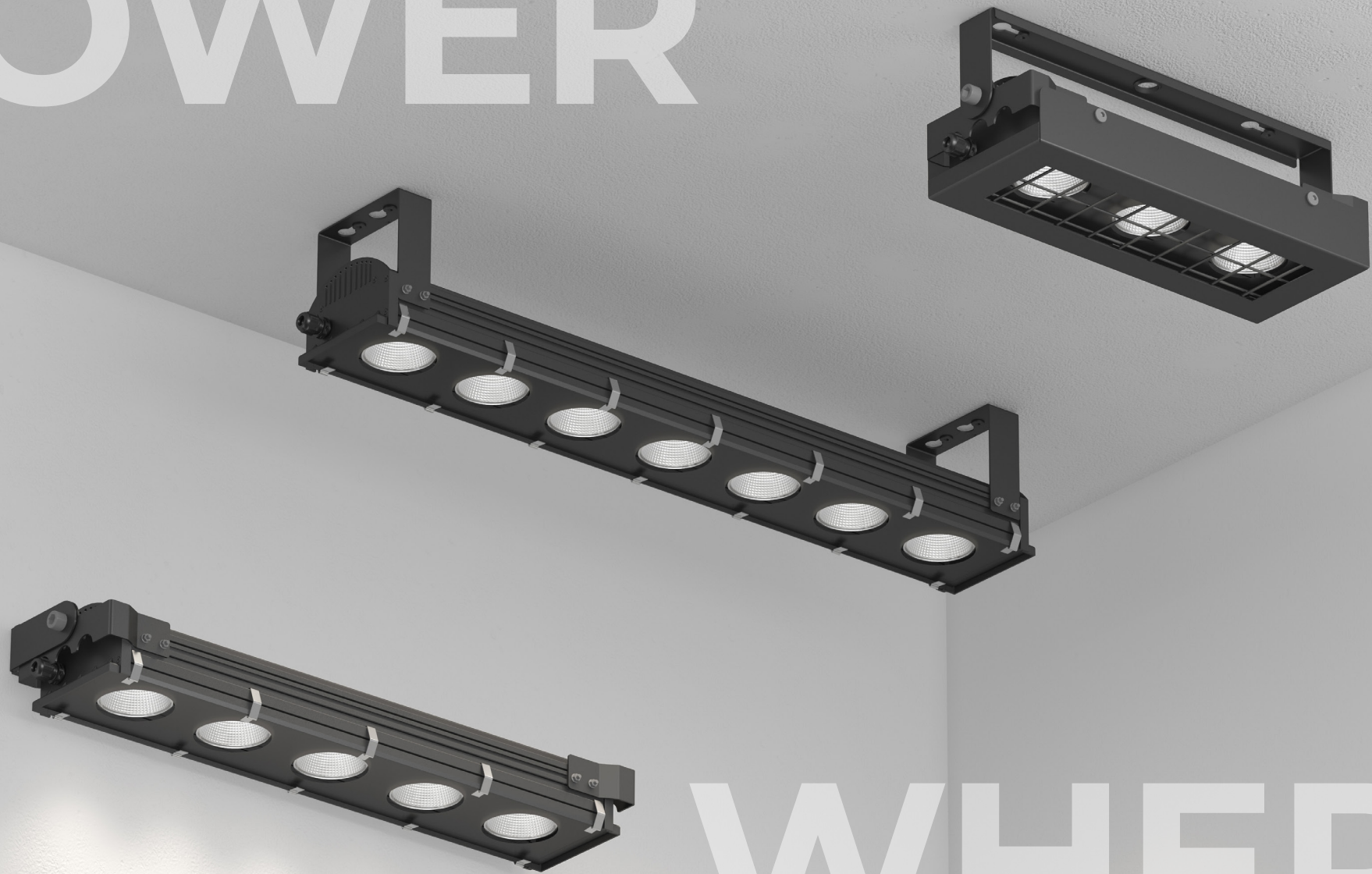


**SUSPENDED**  
07.180.4XXX.03.XXX

\_wall  
surface-mounted  
suspended



POWER



WHERE  
IT MATTERS

# MAGNUM Safety Grille

## OPTIMIZE PROTECTION WITH MAGNUM ACCESSORIES

To ensure long-term performance and durability in demanding environments, the right accessories are essential. Our robust MAGNUM Safety Grille enhances both luminaire protection and application flexibility.



### Designed for demanding spaces

Ideal for sports halls, industrial environments, and high-activity zones



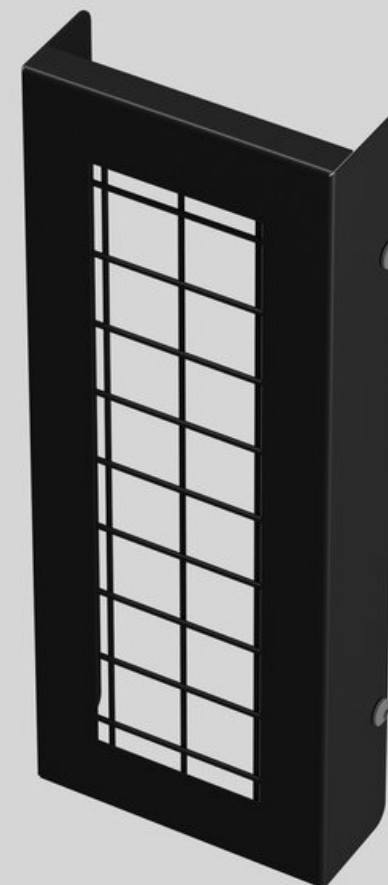
### Impact-resistant protection

Powder-coated steel grille prevents damage from ball strikes and mechanical stress (IK-rated)



### Light performance preserved

Optimized design ensures consistent light output



## MAGNUM SAFETY GRILLE

12.180.000X.XX

THE COLOUR OF THE GRILLE

RAL9005 (black)

LENGHT L [mm]

416, 526, 636, 746, 856





Made to handle  
**MORE** than light.





PROJECT

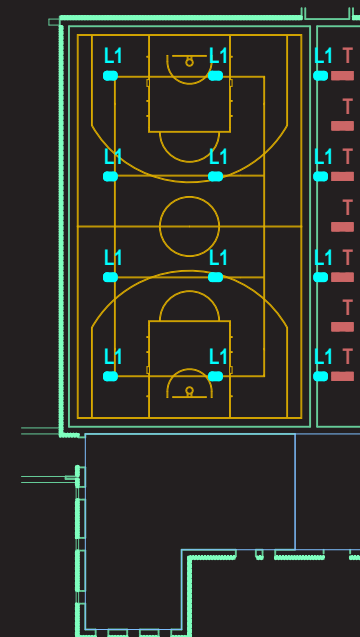
# School Gymnasium Lighting

## L1 - MAGNUM




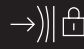
Surface Transparent HO/840,  
39d., L=416mm, IP65,  
RAL9005

## T - Tajfun

Surface PLX ST/840,  
L=1200mm, IP65, white/alu



## MAGNUM LUMINAIRES WERE SPECIFIED WITH THE FOLLOWING CONFIGURATION:

OPTIC TYPE	39° medium symmetric beam	
LED	3 light sources per luminaire	
MOUNTING HEIGHT	7.8 m	
MECHANICAL STRENGTH	High – tested and rated IK10 according to EN 62262	

This setup delivered the target illuminance and uniformity across the entire playing surface without over lighting, shadow zones, or excessive energy use.

The **MAGNUM Safety Grille** ensures reliable protection of the luminaire without compromising its photometric performance—supporting safe, standard-compliant lighting in impact-prone zones.



# Lighting \_in Action

The MAGNUM luminaire delivers high-efficiency, precisely controlled lighting for demanding environments. Available with different optics, it ensures optimal visual comfort, safety, and functional performance across a wide range of industrial, logistics, and sports applications.





# Optical Precision for Industrial Applications

## INDUSTRIAL HALLS & WAREHOUSES

### SYMMETRICAL OPTICS

- even light for manufacturing and storage
- improves clarity and efficiency

## MANUFACTURING

### SYMMETRICAL OPTICS

- bright, balanced light for assembly and production lines
- boosts accuracy, reduces visual fatigue during detailed tasks

## BUILDING SURROUNDINGS & PATHWAYS

### ASYMMETRICAL OPTICS

- increases driver and pedestrian safety, reduces light pollution
- improves safety and limits trespass

## LOGISTICS FACILITIES & LOADING ZONES

### ASYMMETRICAL OPTICS

- targeted lighting for loading bays and delivery points
- improves visibility, enhances safety and workflow efficiency

## MAINTENANCE ZONES

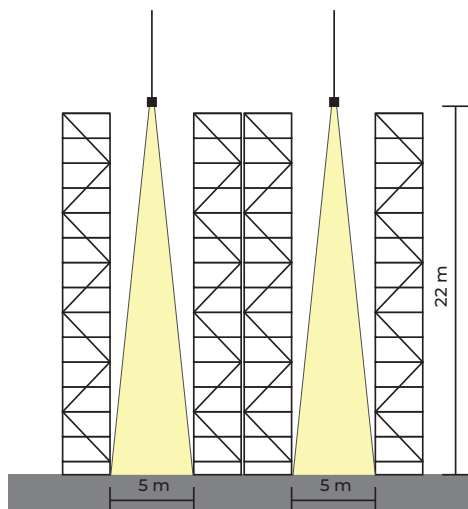
### SYMMETRICAL OPTICS

- uniform light for detail tasks and servicing
- prevents shadows around equipment

# Industrial Halls & Warehouses

In large-scale production and storage environments, symmetrical light distribution is ideal for delivering uniform horizontal illumination. It ensures consistent lighting across wide areas, reduces shadows, and supports safe, efficient workflows—especially in high-ceiling or open-plan zones.

For more targeted applications like racked aisles or linear workstations, elliptical light distribution offers precise beam control. Its oval-shaped spread focuses light along narrow paths, minimizing glare and light waste while improving visual comfort and energy efficiency.



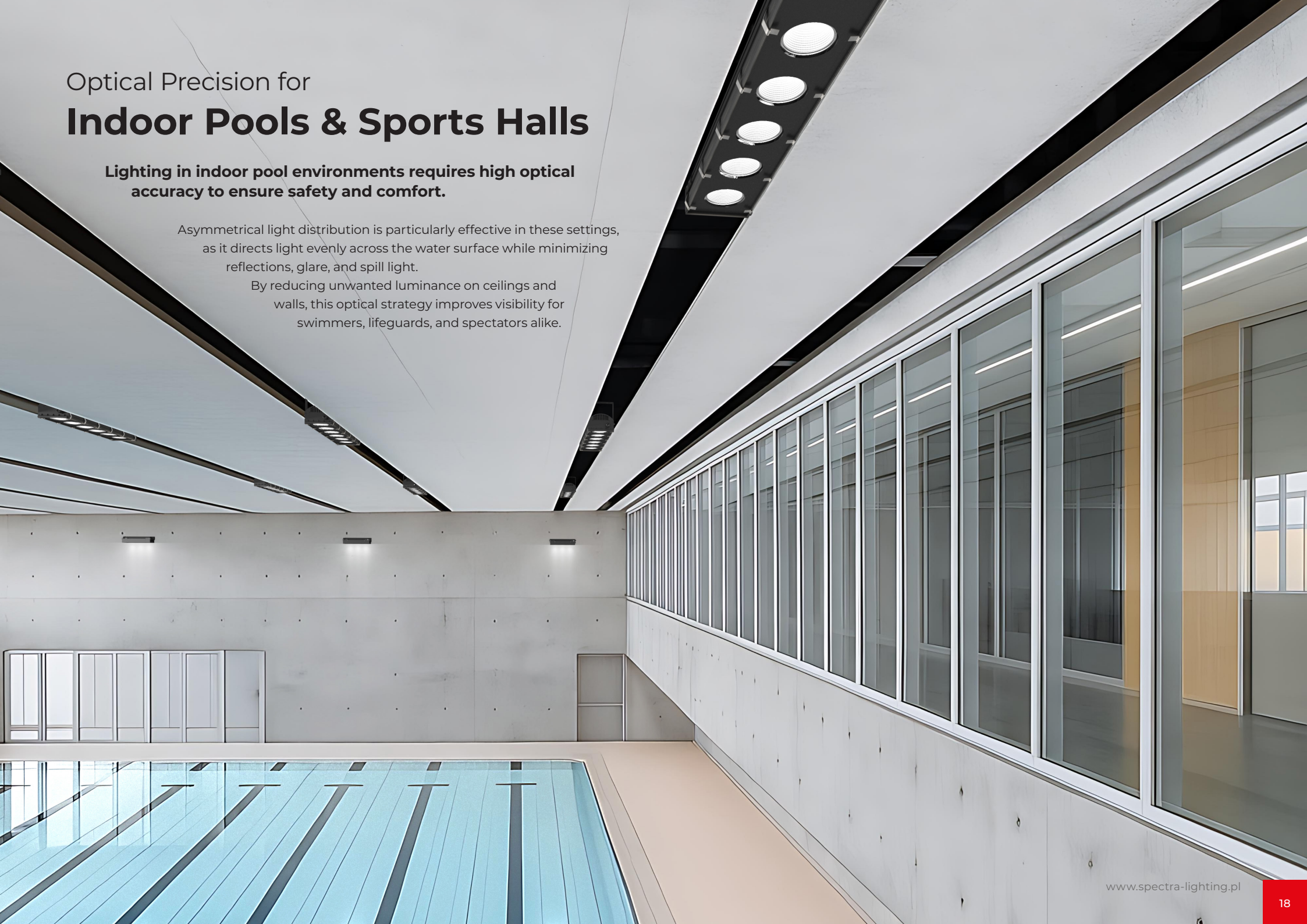


# Optical Precision for Indoor Pools & Sports Halls

**Lighting in indoor pool environments requires high optical accuracy to ensure safety and comfort.**

Asymmetrical light distribution is particularly effective in these settings, as it directs light evenly across the water surface while minimizing reflections, glare, and spill light.

By reducing unwanted luminance on ceilings and walls, this optical strategy improves visibility for swimmers, lifeguards, and spectators alike.



## ELLIPTICAL BEAM OPTICS

The elliptical optic in the MAGNUM luminaire offers a specialized light distribution designed to support precise, efficient lighting in industrial and architectural environments.



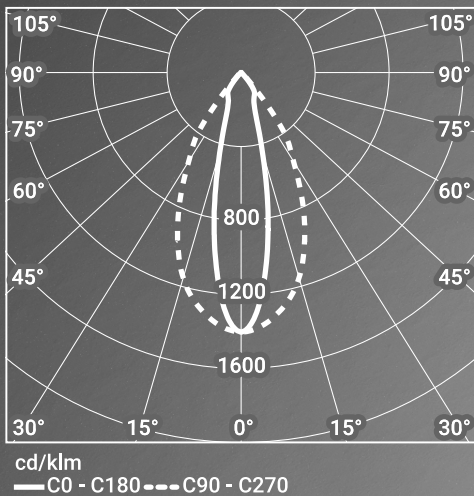
# Elliptical light

\_MAGNUM



# Elliptical beam control for efficient task lighting.

This is the best solution if you need to achieve a certain expected light intensity on the floor level in corridor-shaped areas.

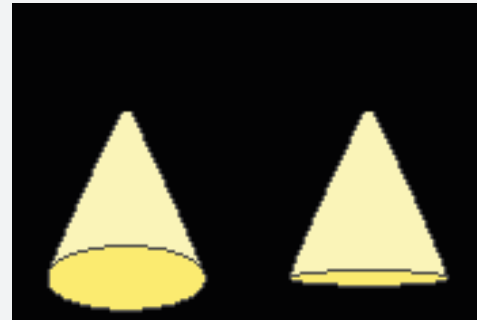


# Key Features & Application Benefits

Unlike symmetrical or asymmetrical options, the elliptical distribution emits a flattened oval beam — providing long, narrow coverage that is ideal for illuminating linear spaces with minimal spill.

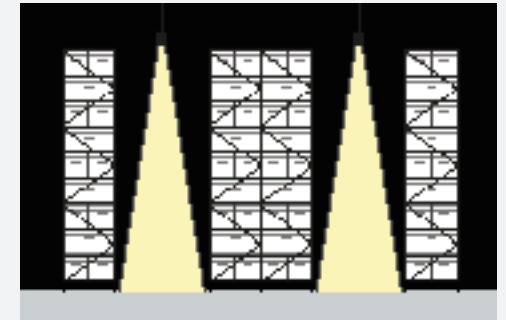
## DIRECTIONAL EFFICIENCY

The elliptical optic is engineered to project light in a horizontal or vertical ellipse, significantly reducing unwanted side light and improving luminous efficacy where space dimensions require elongated light footprints.



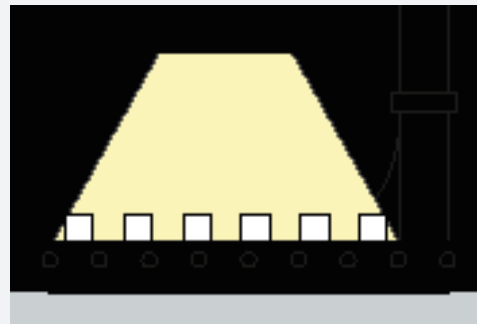
## SPACE-SPECIFIC TARGETING

Perfect for rack aisles, machine perimeters, walkways, or long wall zones in production or logistics environments—where controlled, directed lighting enhances both safety and usability.



## VISUAL UNIFORMITY

Ideal for areas where uniform coverage along corridors, production lines, or equipment zones is critical. It minimizes shadowing and glare, enhancing task visibility and operator comfort.



## MOUNTING FLEXIBILITY

Designed for versatility, the elliptical beam works effectively whether the luminaire is mounted directly to ceilings, suspended, or wall-mounted at an angle. Beam direction can be tailored based on the desired axis of distribution.





A large industrial hall with a high ceiling and orange overhead cranes. In the foreground, several large, white, conical storage containers are visible. The floor is dark and reflective.

1.

Perimeter or equipment zone  
illumination in industrial halls

A long, narrow aisle in a warehouse with high metal shelving units on both sides. The shelves are filled with cardboard boxes. The floor is dark and reflective.

2.

Aisle lighting in logistics centers and  
warehouses

An indoor sports facility with a wooden floor and white walls. A volleyball net is set up in the center of the room. The floor has blue and yellow markings.

3.

Sports facilities

The exterior of a large warehouse at dusk. The building has a long, low profile with multiple loading docks. The sky is a mix of orange and blue, and the ground is dark.

4.

Wall-washing or façade accentuation in  
architectural interiors

## Recommended Applications

This optic fills a critical niche in professional lighting design—offering a smart solution for energy-conscious, task-specific lighting where space geometry demands tighter control. When paired with DALI or ON/OFF control systems, it supports full integration into modern Industry 4.0-compliant environments.





**Spectra Lighting provides customized, standards-compliant lighting solutions that balance functionality, aesthetics, and interior requirements.**

If you have any inquiries or would like to schedule a personalized consultation for your project, please do not hesitate to contact us via phone or email:

**+48 22 567 01 00**  
**info@spectra-lighting.pl**



Scan the code to explore the range of luminaires  
available on the website

