



# Lovo 80 EC\_

FOR THE GLOBAL TRACK

# LOVO 80 EC

THE LOVO 80 EC SPOTLIGHT NOT ONLY BRIGHTEN UP SPACES BUT ALSO ADDS A UNIQUE CHARACTER TO THEM, MAKING IT AN EXTRAORDINARY LIGHTING PROPOSITION.

---

The LOVO 80 EC spotlight is an outstanding product that can uplift the look of any interior. Its modern and minimalist design not only enhances the visual appeal of a room but also **serves a practical purpose**. Customers can select from a range of standard RAL colors or **Spectra's unique palette** to customize the projector to their preference.

The excellence of this product extends beyond its appearance to its quality and environmental impact. The LOVO 80 EC has been designed with sustainability and energy efficiency in mind, ensuring that it delivers reliable and long-lasting performance.

One of the remarkable features of this lighting solution is its versatility. It offers a **wide range of color temperatures**, allowing customers to ad-

just the light to their needs and create the desired ambiance in the room. Whether you prefer warm, muted tones or cooler, more modern ones, the LOVO 80 EC has got you covered.

This product is a valuable investment that can have a **positive impact on your store's image, customer experience**, and sales effectiveness. It goes beyond being merely a lighting solution and is about style, functionality, and sustainability all in one. It helps create an inviting atmosphere that fosters a pleasant shopping experience.

So, if you're seeking an aesthetically pleasing and environmentally friendly lighting solution, LOVO 80 EC is the perfect choice for you.

The provided dimensions and technical information are for reference only. Actual data may vary slightly due to the production process. Spectra Lighting reserves the right to change the presented materials and technical parameters of products without prior notice. The images show a representative representation of the products and colors. The finish, color, and appearance of the optics depend on the luminaire selected and may differ from those shown in the image.

# Lighting individualism

CUSTOMIZE TO YOUR NEEDS

## Mechanical data

### APPLICATION

stores, museums, exhibitions

### MOUNTING TYPE

for the global track

### DIFFUSER

no diffuser

*upon request: micro-p, honeycomb, frost, transparent*

### POWER SUPPLY

electronic, included with luminaire

### PROTECTION

IP20



NO DIFFUSER



ON/  
OFF



DALI



IP20



230 V



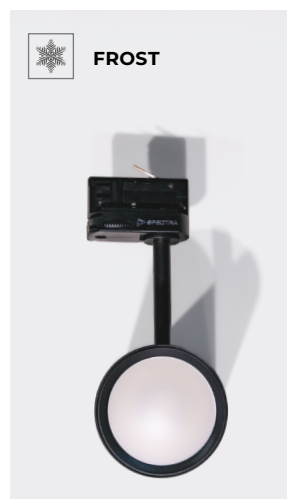
CE



MICRO-P



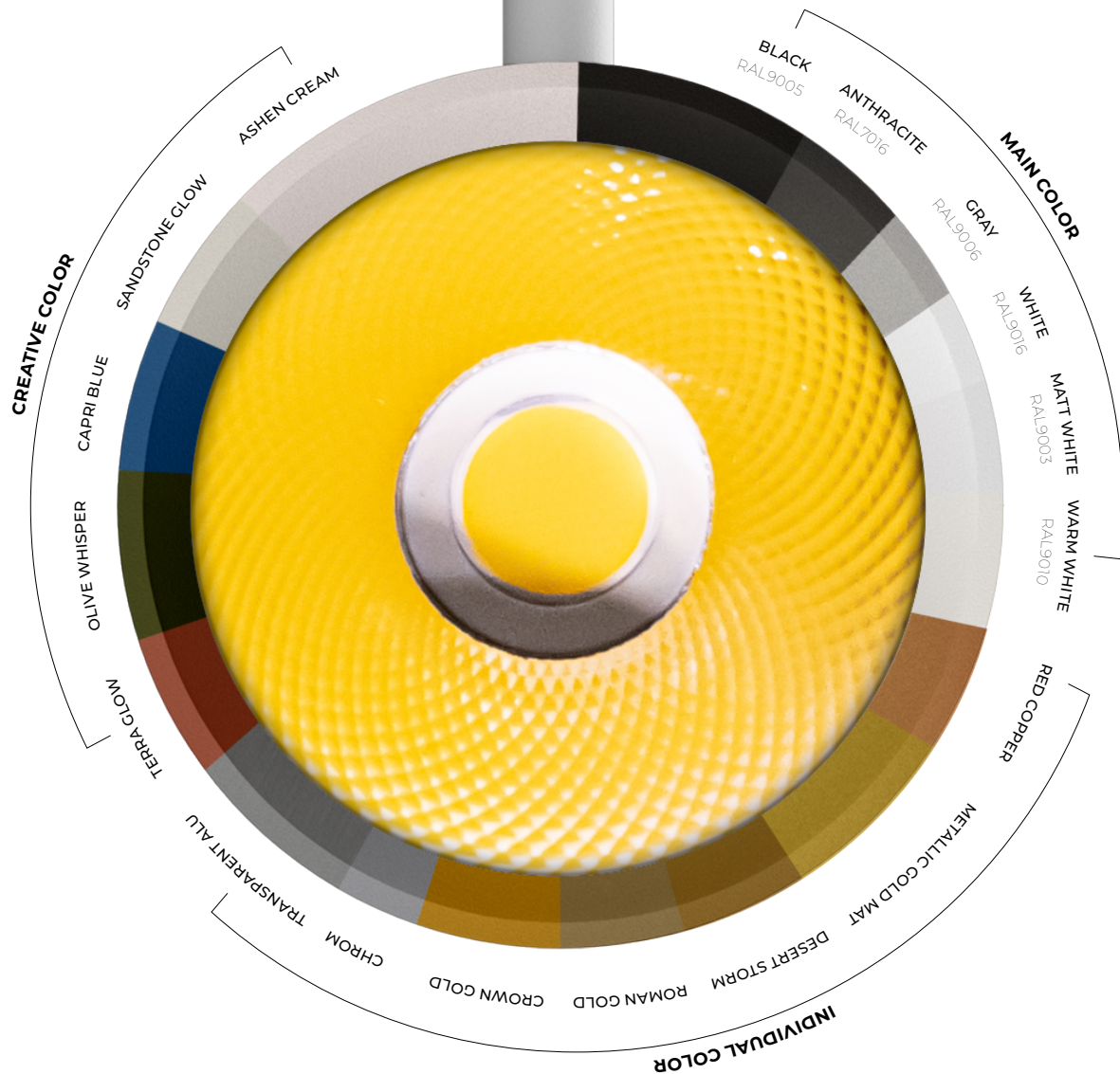
HONEYCOMB



FROST



TRANSPARENT

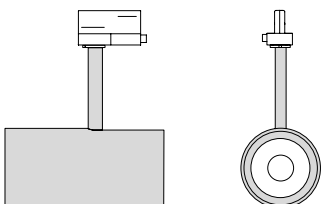


## Choose your color

### PAINT SPECIFIC PROJECTOR ELEMENTS ACCORDING TO YOUR PREFERENCES

You can choose **separate RAL colors** or use a special **Spectra palette** for the inner ring and projector to achieve your desired effect.

#### ELEMENTS AVAILABLE FOR PAINTING ●



#### Mechanical data

**LUMINAIRE**  
aluminum

**FACTORY COLOR**  
black, white, gray

#### Electrical data

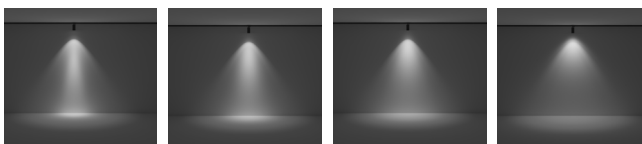
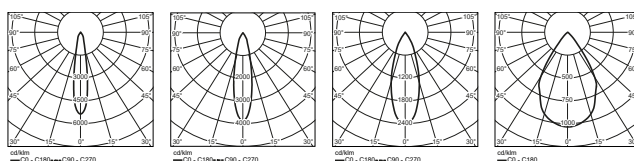
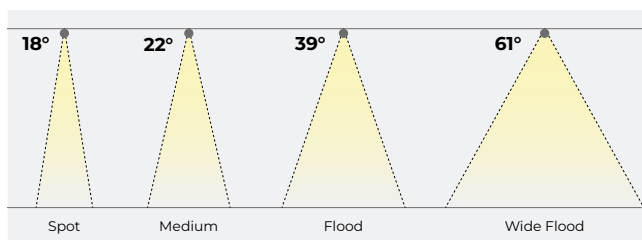
**LUMINAIRE POWER**  
7 - 19 W

**LUMINOUS EFFICACY**  
do 155 lm/W

**LUMINOUS FLUX**  
800 - 2500 lm



↑ Sinsay, Osowa, Gdańsk  
 Polish clothing store chain  
 LPP, operating across almost  
 all of Europe



### Optical data

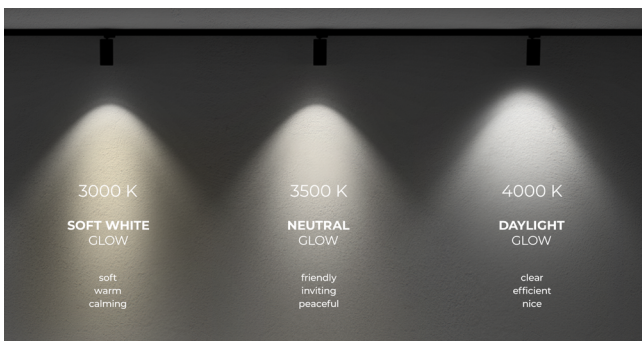
**COLOR TEMPERATURE**  
 3000 K, 3500 K, 4000 K

**CRI**  
 90

**SDCM**  
 3 by default, 2 with Philips PC source  
 or PW HE+

**ENERGY EFFICIENCY CLASS**  
 D, E

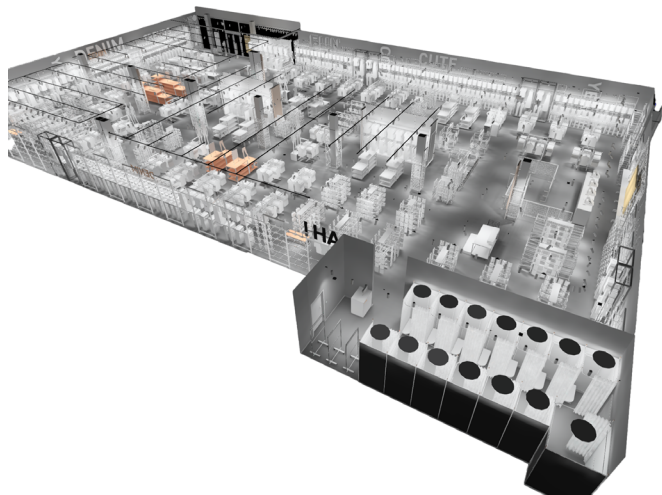
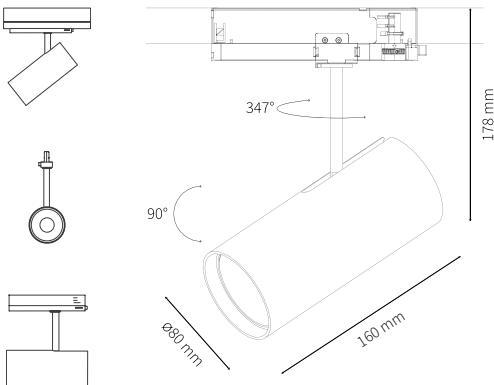
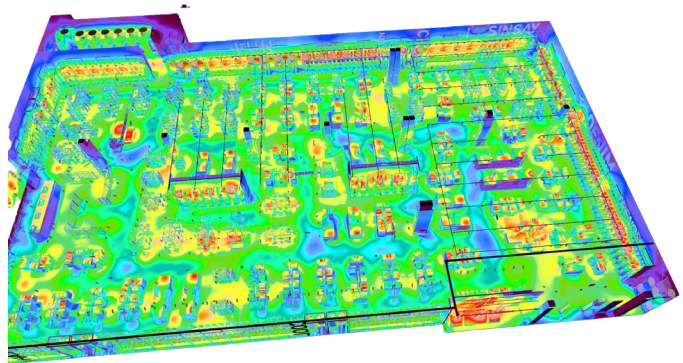
**LUMINOUS FLUX MAINTENANCE**  
 L80B10@50.000h





Our lighting systems utilizing the LOVO 80 EC technology, plays a crucial role in **enhancing the presentation of clothing stores**. The luminaires are designed to be functional and seamlessly integrate with the overall concept of the space.

Thanks to our lighting system, stores can **showcase their assortment in an attractive and professional manner**. The Lovo 80 EC light is characterized by high-quality illumination that accurately renders the colors of clothes, highlighting their details and textures. This technology allows for the creation of **natural light** that enables customers to accurately assess the appearance of clothing even in fitting rooms.





## We help others to be more ECO

With LED technology in our products, we help others become more environmentally friendly.

„In the year 2022, we have opened 395 new salons under our brand, and all of them have been equipped with LED lighting. This not only consumes **40% less electricity** but also **generates less heat**, which in turn helps us to **reduce the electricity consumption** by air conditioning.”

- LPP, Sustainability Report for the year 2022/2023



Sinsay, Fort Woła, Warsaw  
Polish clothing store chain LPP, operating across almost all of Europe



Sinsay, Fort Woła, Warsaw  
Polish clothing store chain LPP, operating across almost all of Europe



## **LOVO 80 EC**

scan the code to see the  
product on the website



[www.spectra-lighting.pl](http://www.spectra-lighting.pl)

+48 22 567 01 00

[info@spectra-lighting.pl](mailto:info@spectra-lighting.pl)